



perfis led



 **freitas irmãos,lda.**



HAKA

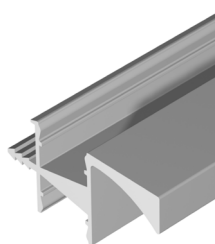


PERFIS DUPLOS

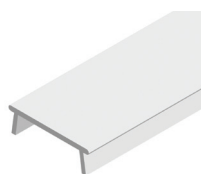
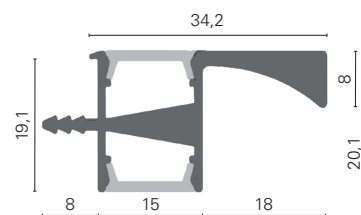
| TAB.  | REF.   | ARTIGO  | MEDIDAS | ACAB.         |
|-------|--------|---|---------|---------------|
| C3P.1 | 700420 | HAKA.01 - Perfil c/ puxador<br>(para painel de 19mm)    | 3000mm  | Anod. Natural |
| C3P.2 | 700421 |   |         | Anod. Preto   |
| C3P.3 | 700422 |   |         | Branco Mate   |
| C3P.4 | 700425 | HAKA.02 - Perfil<br>(para painel ou ilharga<br>de 19mm) | 3000mm  | Anod. Natural |
| C3P.5 | 700426 |   |         | Anod. Preto   |
| C3P.6 | 700427 |   |         | Branco Mate   |
| C3P.7 | 700010 | Difusor   | 3000mm  | Branco        |



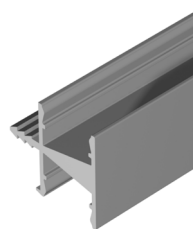
> Neste perfil devem ser usadas fitas LED com max. 11mm.



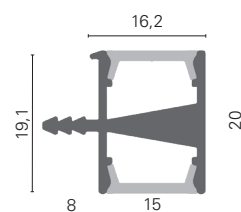
HAKA.01



DIFUSOR



HAKA.02



> Aplicação VERTICAL ou HORIZONTAL

## STAG

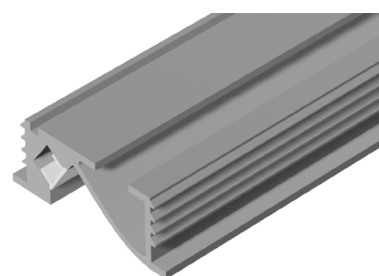
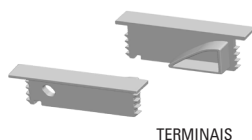
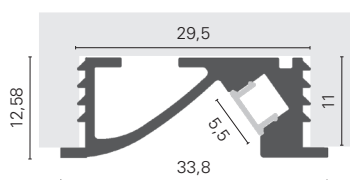
### PERFIL COM ORIENTAÇÃO DE LUZ

| TAB.  | REF.   | ARTIGO          | MEDIDAS | ACAB.         |
|-------|--------|-----------------|---------|---------------|
| C3P.8 | 800130 | Perfil *        | 2500mm  | Anod. Natural |
| C3P.9 | 800131 | Terminais (par) | /       | Plástico      |



\* Com difusor incluído.

> Neste perfil devem ser usadas fitas LED com max. 4mm.



KUBIC

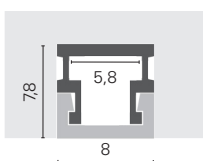
PERFIL DE EMBUTIR

| TAB.   | REF.   | ARTIGO          | MEDIDAS  | ACAB.       |
|--------|--------|-----------------|----------|-------------|
| C3P.10 | 800140 | Perfil *        | 2500mm   | Alumínio    |
| C3P.11 | 800143 | Terminais (par) | 8x8x7mm  | Cinza Prata |
| C3P.12 | 800146 | Clip (un.)      | 19x9x3mm | Zincado     |



\* Com difusor incluído.

> Neste perfil devem ser usadas fitas LED com max. 4mm.



PERFIL



TERMINAIS



CLIP



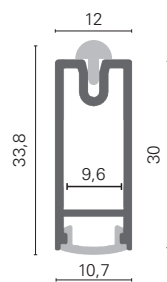
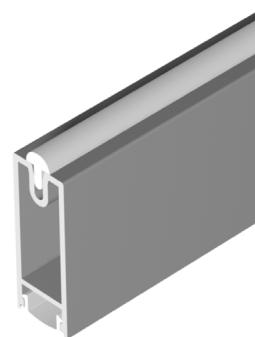
NORI LED



PERFIL DE ROUPEIRO

| TAB.   | REF.   | ARTIGO       | MEDIDAS        | ACAB.         |
|--------|--------|--------------|----------------|---------------|
| C3P.13 | 700431 | Perfil       | 3000mm         |               |
| C3P.14 | 819012 | Sup. Lateral | 39,5x23x11,5mm | Preto Mate    |
| C3P.15 | 819032 | Sup. Central | 66x21x12mm     |               |
| C3P.16 | 819035 | Sup. p/ Cabo | 39,5x23x11,5mm |               |
| C3P.17 | 700432 | Perfil       | 3000mm         |               |
| C3P.18 | 819013 | Sup. Lateral | 39,5x23x11,5mm | Branco Mate   |
| C3P.19 | 819033 | Sup. Central | 66x21x12mm     |               |
| C3P.20 | 819037 | Sup. p/ Cabo | 39,5x23x11,5mm |               |
| C3P.21 | 700433 | Perfil       | 3000mm         |               |
| C3P.22 | 819014 | Sup. Lateral | 39,5x23x11,5mm | Moka          |
| C3P.23 | 819034 | Sup. Central | 66x21x12mm     |               |
| C3P.24 | 819036 | Sup. p/ Cabo | 39,5x23x11,5mm |               |
| C3P.25 | 700430 | Perfil       | 3000mm         |               |
| C3P.26 | 819021 | Sup. Lateral | 39,5x23x11,5mm | Anod. natural |
| C3P.27 | 819031 | Sup. Central | 66x21x12mm     |               |
| C3P.28 | 819038 | Sup. p/ Cabo | 39,5x23x11,5mm |               |
| C3P.29 | 700434 | Difusor      | 3000mm         | Branco        |
| C3P.30 | 700435 | Borracha     | 3000mm         | Transp.       |

> Neste perfil devem ser usadas fitas LED com max. 4mm.



Suporte p/ Cabo



Suporte lateral



Suporte central

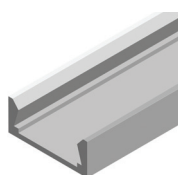
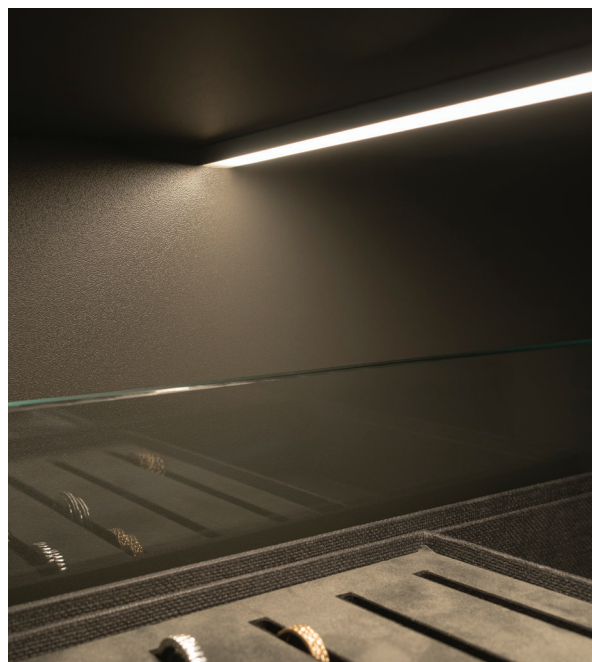
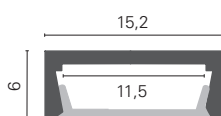
LETO

PERFIL À FACE

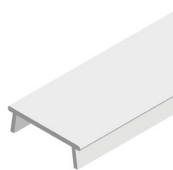
| TAB.   | REF.   | ARTIGO          | MEDIDAS      | ACAB.    |
|--------|--------|-----------------|--------------|----------|
| C3P.31 | 700017 | Perfil          | 3000/5000*mm | Alumínio |
| C3P.32 | 700010 | Difusor         | 3000/5000*mm | Branco   |
| C3P.33 | 610206 | Difusor curvo   | 2000mm       | Branco   |
| C3P.34 | 600202 | Terminais (par) | 22x18x6mm    | Cinza    |
| C3P.35 | 600200 | Clips (par)     | 20x15x6mm    | Zincado  |

\* Quantidade Min. de 100m em barras de 5m.

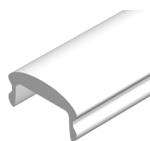
> Neste perfil devem ser usadas fitas LED com max. 11mm.



PERFIL



DIFUSOR



DIFUSOR CURVO



TERMINAIS



CLIPS

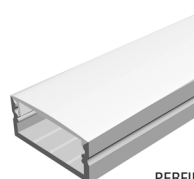
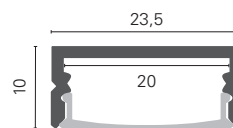
ORLY

PERFIL À FACE

| TAB.   | REF.   | ARTIGO          | MEDIDAS       | ACAB.    |
|--------|--------|-----------------|---------------|----------|
| C3P.36 | 800050 | Perfil *        | 23,5x10x2500  | Alumínio |
| C3P.37 | 800051 | Terminais (par) | 23,6x10,7x8mm | Cinza    |
| C3P.38 | 800052 | Clips (par)     | 26,6x15x10mm  | Transp.  |

\* Com difusor incluído.

> Neste perfil devem ser usadas fitas LED com max. 19mm.



PERFIL



TERMINAIS



CLIPS

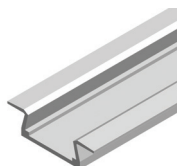
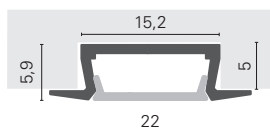
## ARES

### PERFIL DE EMBUTIR

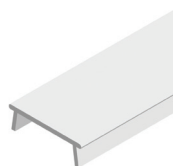
| TAB.   | REF.   | ARTIGO          | MEDIDAS      | ACAB.    |
|--------|--------|-----------------|--------------|----------|
| C3P.39 | 700012 | Perfil          | 3000/5000*mm | Alumínio |
| C3P.40 | 700010 | Difusor         | 3000/5000*mm | Branco   |
| C3P.41 | 610206 | Difusor curvo   | 2000mm       | Branco   |
| C3P.42 | 600201 | Terminais (par) | 22x18x6mm    | Cinza    |

\* Quantidade Min. de 100m em barras de 5m.

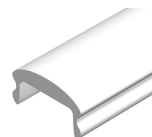
> Neste perfil devem ser usadas fitas LED com max. 11mm.



PERFIL



DIFUSOR



DIFUSOR CURVO



TERMINAIS

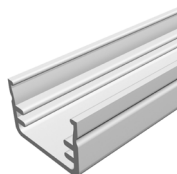
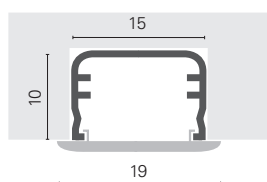
## DORIS



### PERFIL DE EMBUTIR

| TAB.   | REF.   | ARTIGO  | MEDIDAS    | ACAB.    |
|--------|--------|---------|------------|----------|
| C3P.43 | 610240 | Perfil  | 3000mm     | Alumínio |
| C3P.44 | 610241 | Difusor | 19x3000mm  | Branco   |
| C3P.45 | 610242 | Clips   | 16x14x10mm | Zincado  |

> Neste perfil devem ser usadas fitas LED com max. 11mm.



PERFIL



DIFUSOR



CLIPS

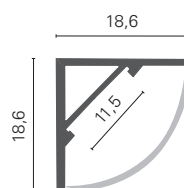


NICE

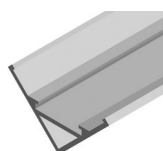


PERFIL PARA CANTOS A 90°

| TAB.   | REF.   | ARTIGO          | MEDIDAS    | ACAB.    |
|--------|--------|-----------------|------------|----------|
| C3P.46 | 610226 | Perfil          | 2000mm     | Alumínio |
| C3P.47 | 610228 | Difusor         | 2000mm     | Branco   |
| C3P.48 | 600228 | Terminais (par) | 19x19x8mm  | Cinza    |
| C3P.49 | 600204 | Clips (par)     | 20x20x25mm | Zincado  |



> Neste perfil devem ser usadas fitas LED com max. 11mm.



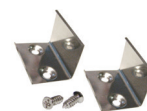
PERFIL



DIFUSOR



TERMINAIS



CLIPS

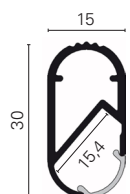
## EURO

### PERFIL DE ROUPEIRO

| TAB.   | REF.   | ARTIGO         | MEDIDAS      | ACAB.    |
|--------|--------|----------------|--------------|----------|
| C3P.50 | 410210 | Perfil *       | 2500mm       | Alumínio |
| C3P.51 | 410211 | Topos (un.)    | 43x19x13mm   | Cromado  |
| C3P.52 | 410212 | Suportes (un.) | 69x49x13,5mm | Cromado  |

\* Com difusor incluído.

> Neste perfil devem ser usadas fitas LED com max. 12mm.



PERFIL



SUPORTES



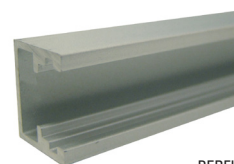
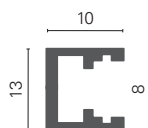
TOPOS

## JUNO

### PERFIL DE PRATELEIRA

| TAB.   | REF.   | ARTIGO | MEDIDAS | ACAB.    |
|--------|--------|--------|---------|----------|
| C3P.53 | 610021 | Perfil | 2000mm  | Alumínio |

> Neste perfil devem ser usadas fitas LED com max. 10mm.



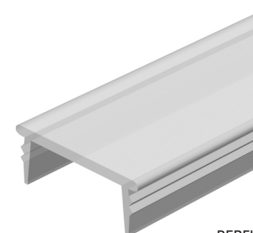
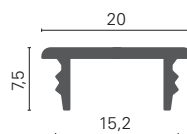
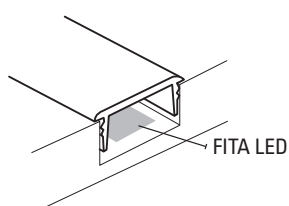
PERFIL

## ODIN

### PERFIL DIFUSOR DE EMBUTIR EM MADEIRA

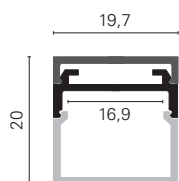
| TAB.   | REF.   | ARTIGO | MEDIDAS | MATERIAL      | ACAB.     |
|--------|--------|--------|---------|---------------|-----------|
| C3P.54 | 610039 | Perfil | 2000mm  | Policarbonato | Br. Fosco |

> Neste perfil devem ser usadas fitas LED com max. 12mm.



PERFIL

ATLA



| TAB.   | REF.   | ARTIGO      | MEDIDAS | ACAB.    |
|--------|--------|-------------|---------|----------|
| C3P.55 | 800014 | Perfil *    | 2500mm  | Alumínio |
| C3P.56 | 800055 | Topos       | 20x20mm | Cinza    |
| C3P.67 | 800026 | Cabos Susp. | 2000mm  | Aço      |
| C3P.68 | 800027 | Cabos Susp. | 4000mm  | Aço      |

\* Inclui difusor

> Fita LED recomendada: 196LED/m - 15mm



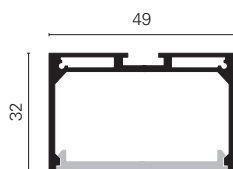
TOPOS



CABOS



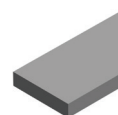
BRAGI



| TAB.   | REF.   | ARTIGO      | MEDIDAS | ACAB.    |
|--------|--------|-------------|---------|----------|
| C3P.57 | 800015 | Perfil *    | 2500mm  | Alumínio |
| C3P.67 | 800026 | Cabos Susp. | 2000mm  | Aço      |
| C3P.68 | 800027 | Cabos Susp. | 4000mm  | Aço      |
| C3P.62 | 800021 | Extensão    | 1000mm  | Alumínio |

\* Inclui difusor e terminais x4

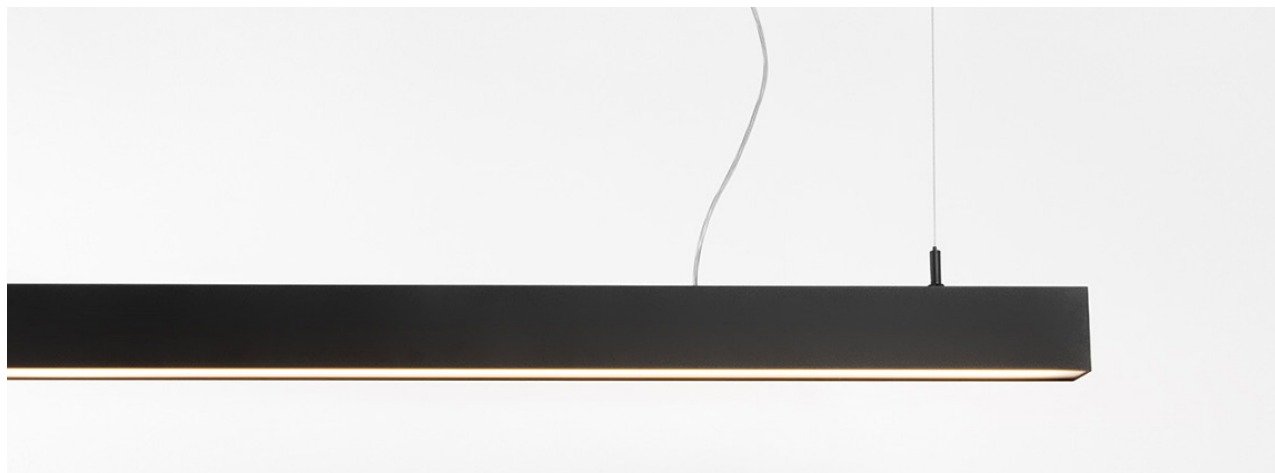
> Fita LED recomendada: 280LED/m - 36mm



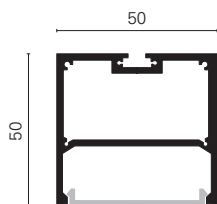
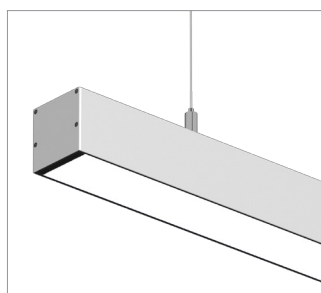
EXTENSÃO  
800021



CABOS



## ELLI



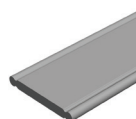
| TAB.   | REF.   | ARTIGO       | MEDIDAS | ACAB.    |
|--------|--------|--------------|---------|----------|
| C3P.58 | 800016 | Perfil *     | 2500mm  | Alumínio |
| C3P.67 | 800026 | Cabos Susp.  | 2000mm  | Aço      |
| C3P.68 | 800027 | Cabos Susp.  | 4000mm  | Aço      |
| C3P.61 | 800020 | Extensão     | 2500mm  | Alumínio |
| C3P.63 | 800022 | Extensão     | 400mm   | Ferro    |
| C3P.64 | 800023 | Conector 90° | 90x90mm | Ferro    |

\* Inclui difusor e terminais x4

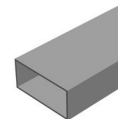
> Fita LED recomendada: 280LED/m - 36mm



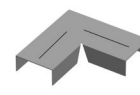
CABOS



EXTENSÃO  
800020

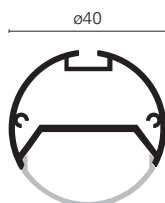
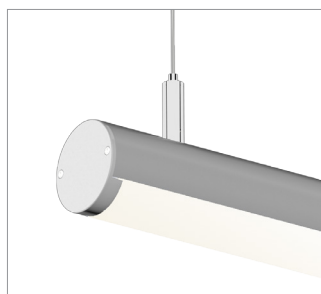


EXTENSÃO  
800022



CONECTOR  
CANTOS 90°

## KARI



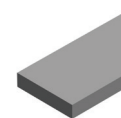
| TAB.   | REF.   | ARTIGO      | MEDIDAS | ACAB.    |
|--------|--------|-------------|---------|----------|
| C3P.59 | 800019 | Perfil *    | 2500mm  | Alumínio |
| C3P.67 | 800026 | Cabos Susp. | 2000mm  | Aço      |
| C3P.68 | 800027 | Cabos Susp. | 4000mm  | Aço      |
| C3P.62 | 800021 | Extensão    | 1000mm  | Alumínio |

\* Inclui difusor e terminais x4

> Fita LED recomendada: 252LED/m - 19mm

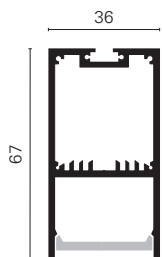


CABOS



EXTENSÃO  
800021

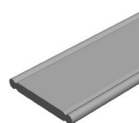
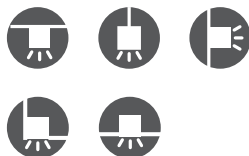
GERD



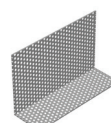
| TAB.   | REF.   | ARTIGO      | MEDIDAS | ACAB.    |
|--------|--------|-------------|---------|----------|
| C3P.60 | 800017 | Perfil *    | 2500mm  | Alumínio |
| C3P.67 | 800026 | Cabos Susp. | 2000mm  | Aço      |
| C3P.68 | 800027 | Cabos Susp. | 4000mm  | Aço      |
| C3P.61 | 800020 | Extensão    | 2500mm  | Alumínio |
| C3P.65 | 800024 | Chapa Perf. | 250mm   | Alumínio |
| C3P.66 | 800025 | Chapa Perf. | 50mm    | Alumínio |

\* Inclui difusor e terminais x4

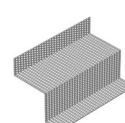
> Fita LED recomendada: 252LED/m - 19mm



EXTENSÃO  
800020



CHAPA  
800025

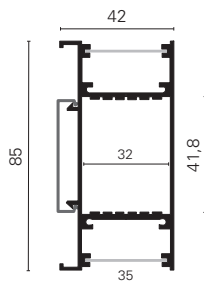


CHAPA  
800024



CABOS

LEVI



| TAB.   | REF.   | ARTIGO    | MEDIDAS   | ACAB.    |
|--------|--------|-----------|-----------|----------|
| C3P.69 | 800060 | Perfil *  | 2500mm    | Alumínio |
| C3P.70 | 800061 | Terminais | 85x42mm   | Alumínio |
| C3P.71 | 800062 | Clips     | 25x38x8mm | Zincado  |

\* Inclui difusor

> Fita LED recomendada: 196LED/m - 15mm



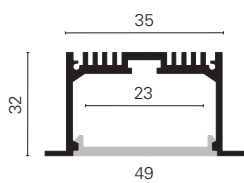
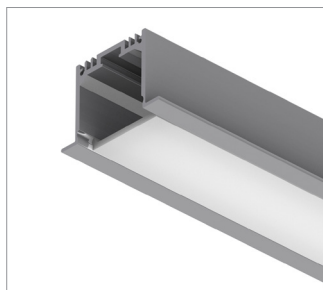
CLIPS



TERMINAIS



JORD . nova versão



| TAB.   | REF.   | ARTIGO   | MEDIDAS | ACAB.    |
|--------|--------|----------|---------|----------|
| C3P.72 | 800018 | Perfil * | 2500mm  | Alumínio |

\* Inclui difusor, terminais x4 e mola de fixação x4.

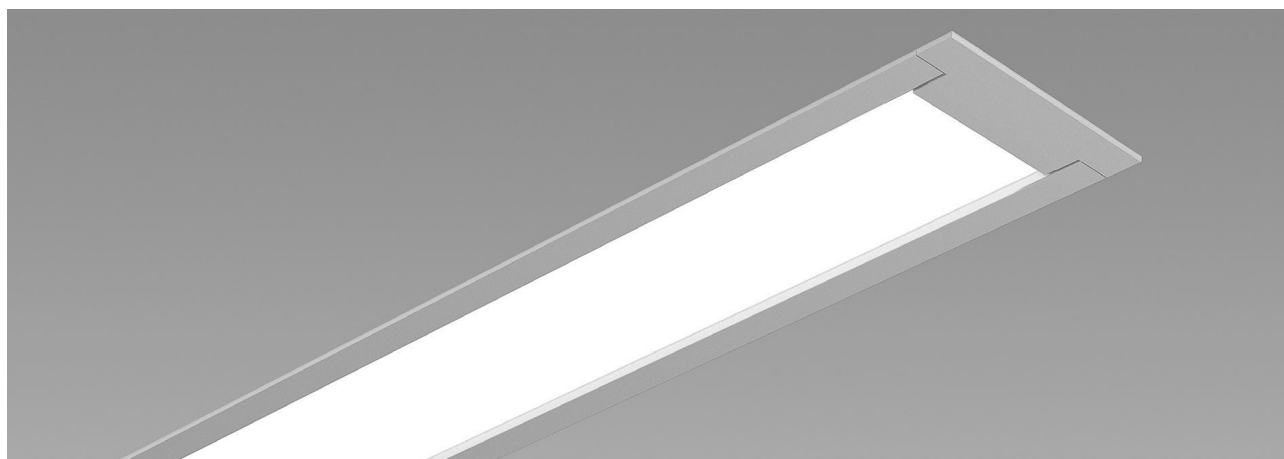
> Fita LED recomendada: 252LED/m - 19mm



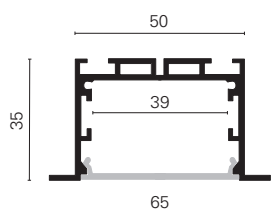
TERMINAIS x4



MOLA DE FIXAÇÃO x4



JORD II



| TAB.   | REF.   | ARTIGO      | MEDIDAS   | ACAB.    |
|--------|--------|-------------|-----------|----------|
| C3P.73 | 800072 | Perfil *    | 2500mm    | Alumínio |
| C3P.74 | 800073 | Terminais   | 65x35mm   | Alumínio |
| C3P.75 | 800078 | Mola        | /         | Zincado  |
| C3P.76 | 800074 | Conector X  | 270x270mm | Alumínio |
| C3P.77 | 800075 | Conector T  | 270x165mm | Alumínio |
| C3P.78 | 800076 | Conector IL | 135x135mm | Alumínio |
| C3P.79 | 800077 | Conector L  | 165x165mm | Alumínio |

\* Inclui difusor

> Fita LED recomendada: 280LED/m - 36mm



CONECTOR X



CONECTOR T



CONECTOR IL



CONECTOR L



TERMINAIS



MOLA DE FIXAÇÃO